



Company Profile

*Global Expertise. Automated
Growth. Trusted Results.*

Table of Contents

- 1. Company Overview**
 - Introduction to TradePaceFX
 - Global Reach & Member Statistics
- 2. Mission & Vision**
- 3. Investment Plans**
 - Beginner Stage One
 - Proficient Plan One
 - Expert Plan One
 - Beginner Stage Two
 - Proficient Plan Two
 - Expert Plan Two
- 4. Getting Started with TradePaceFX**
 - Account Registration
 - KYC Verification
 - Funding Your Wallet
 - Choosing & Activating a Plan
- 5. Crypto Trading Partners**
 - Institutional Partners & Exchanges
 - Trading Infrastructure & Asset Pool
- 6. Referral & Affiliate Program**
 - Affiliate Commission System (5-Level)
 - Representative Commission & Privileges
 - Tools for Growth & Promotion
- 7. Security & Technology**
 - Platform Infrastructure
 - Data Protection Measures
 - Accessibility & User Experience
- 8. Frequently Asked Questions (FAQ)**
- 9. Contact Information**
 - Email
 - Registered Office
 - Website

Introduction to TradePaceFX

At TradePaceFX, we are committed to making high-yield investment opportunities accessible to everyone. As a New Zealand-registered company, we specialize in automated trading and financial management, combining expert-driven strategies with cutting-edge technology to help our users grow their wealth. Our platform is built for both beginners and experienced investors, offering a seamless experience across cryptocurrency, gold, stocks, and bonds. Through automation and intelligent trading systems, we eliminate the complexities of market analysis and trading, so our clients can focus on their goals while we handle the hard work. We take pride in being a secure, transparent, and performance-focused platform that delivers real results through carefully managed investment portfolios. Our operations are designed with reliability and simplicity in mind, backed by 24/7 customer support and a user-friendly interface.



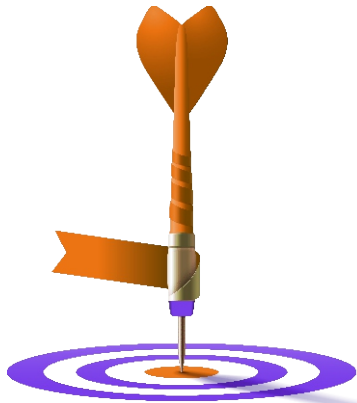
Global Reach & Member Statistics

We've grown into a global investment community, serving thousands of members from various parts of the world. Our diverse network includes investors from Africa, Asia, Europe, and the Americas, all connected by a shared goal of financial growth.

- **Global Community:** We serve a wide range of clients across continents who trust us with their investments. **24/7 Support:** Our multilingual support team is always available to assist our global users.
- **Consistent Growth:** More people are joining our platform every day, drawn by our reliable performance and transparent processes.
- **Borderless Access:** We provide smooth international transactions, allowing users to invest and earn from anywhere in the world.

Mission & Vision

Our Mission



At TradePaceFX, our mission is to empower individuals around the world to achieve financial independence through smart, secure, and automated investment solutions. We strive to simplify the trading experience by offering reliable, technology-driven tools that help our users grow their capital with confidence and ease. We are committed to integrity, transparency, and innovation—ensuring that every member of our community has access to world-class investment opportunities, regardless of their background or experience level.

Our Vision



Our vision is to become a global leader in automated investment services, recognized for trust, performance, and impact. We envision a future where everyone, everywhere, can participate in financial markets with the same confidence as seasoned investors. By continually enhancing our platform and expanding our reach, we aim to redefine what it means to invest—and to open the doors of wealth creation to millions around the globe.

Investment Plans

Beginner Stage One

Our Beginner Stage One plan is perfect for first-time investors looking to enter the world of automated trading with confidence. With a minimum investment of \$1,000, this plan offers a 3% return over 6 months, along with a 7% referral bonus. It's designed for those who want to test the waters while still enjoying steady, secure returns.

Proficient Plan One

The Proficient Plan One is crafted for individuals who are ready to invest a little more for a significantly higher return. With investments starting from \$2,000 to \$100,000, this plan offers an impressive 10% return over 6 months. It strikes the right balance between growth potential and capital security—ideal for users looking to scale their earnings more confidently.

Expert Plan One

For experienced investors seeking aggressive growth, the Expert Plan One provides a 35% return on investments ranging from \$5,000 to \$100,000, over a period of 6 months. This plan is tailored for individuals who understand the value of strategic, high-yield opportunities with robust support and transparency.

Beginner Stage Two

With a higher entry point, Beginner Stage Two is built for investors ready to move into large-scale territory. Starting at \$50,000, this plan delivers a compelling 50% return over 6 months. It's designed to reward bold investors with consistent, strong earnings—backed by our proven trading systems.

Proficient Plan Two

Proficient Plan Two is ideal for seasoned investors seeking to optimize returns without compromising on duration. With a 75% return on investments starting at \$100,000, this plan offers premium performance over just 6 months. It's built to maximize returns while keeping investors in control of their financial strategy.

Expert Plan Two

Our flagship plan, Expert Plan Two, is designed for high-net-worth individuals or institutions aiming for substantial returns. Starting at \$300,000, this plan offers a 100% return over 12 months—effectively doubling your capital in a year. It's the ultimate choice for those ready to fully capitalize on TradePaceFX's trading expertise and infrastructure.

Plan Name	Investment Range	ROI	Duration	Referral Bonus
Beginner Stage One	\$1,000 - \$50,000	3%	6 months	7%
Proficient Plan One	\$2,000 - \$100,000	10%	6 months	7%
Expert Plan One	\$5,000 - \$100,000	35%	6 months	7%
Beginner Stage Two	\$50,000 - Unlimited	50%	6 months	7%
Proficient Plan Two	\$100,000 - Unlimited	75%	6 months	7%
Expert Plan Two	\$300,000 - Unlimited	100%	12 months	7%

Getting Started with TradePaceFX

Starting your investment journey with TradePaceFX is simple, secure, and straightforward. Follow these four steps to begin earning through our automated trading platform:



1. Account Registration

Go to TradePaceFX.com and click “Register.” Enter your details, set a secure password, and submit. Confirm your email to activate your account and access your dashboard.

2. KYC Verification

To keep the platform secure, complete our KYC process by uploading a valid ID and proof of address. This step ensures compliance and protects all users.

3. Funding Your Wallet

Once verified, you can fund your wallet using options like Bitcoin or USDT. Your balance updates as soon as the transaction is confirmed.

4. Choosing & Activating a Plan

Pick the investment plan that fits your goals and activate it with one click. Your earnings start based on the plan’s return rate and duration.

Crypto Trading Partners

At TradePaceFX, we've established solid partnerships with some of the world's most trusted cryptocurrency exchanges to ensure seamless, high-liquidity trading experiences for our investors.

Institutional Partners & Exchanges

Our trading network is powered by collaborations with leading crypto exchanges, including:

- **Bitstamp**
- **CEX.IO**
- **Bitfinex**
- **Kraken**
- **Poloniex**

These partners provide access to deep liquidity pools, fast trade execution, and robust market data infrastructure. Working with these regulated exchanges ensures our platform maintains industry-leading performance and transparency standards.

Trading Infrastructure & Asset Pool

Through direct API integrations with our partners, our trading systems leverage:

- **Major cryptocurrencies** such as Bitcoin, Ethereum, and USDT
- **Altcoins** with strong market momentum
- **Stablecoins** for risk-balanced allocations
- **Diversified trading strategies** powered by AI and real-time market analytics

This infrastructure allows us to deliver consistent results across all investment plans with minimal risk and maximum precision.



Referral & Affiliate Program

At TradePaceFX, we believe in growing together. Our Referral and Affiliate Program is designed to reward users who actively promote the platform, build teams, and contribute to our expanding community.

Affiliate Commission System

We offer a generous 5-level commission structure that allows affiliates to earn from both direct and indirect referrals:

Level 1 (Direct referrals): 7%

Level 2: 3%

Level 3: 2%

Level 4: 1%

Level 5: 1%

This multi-tier model encourages community building and long-term earning potential for our dedicated promoters.

Representative Commission & Privileges

High-performing affiliates can qualify as regional representatives and access enhanced benefits, including:

- Higher commission rates and team bonuses
- Exclusive marketing materials
- Dedicated account support
- Visibility and promotion on our platform
- Leadership positions within their region

This recognition comes with added responsibilities, empowering leaders to grow localized communities and educate new users.

Tools for Growth & Promotion

We provide affiliates with powerful tools to succeed, including:

- Personalized referral links and real-time tracking
- Custom banners and branded creatives
- Promotional materials (PDFs, videos, presentations) Access to training webinars and affiliate guides
- Social media templates and tips for outreach

Whether you're a social media influencer or a financial educator, our tools are built to help you grow your audience—and your earnings.



Security & Technology

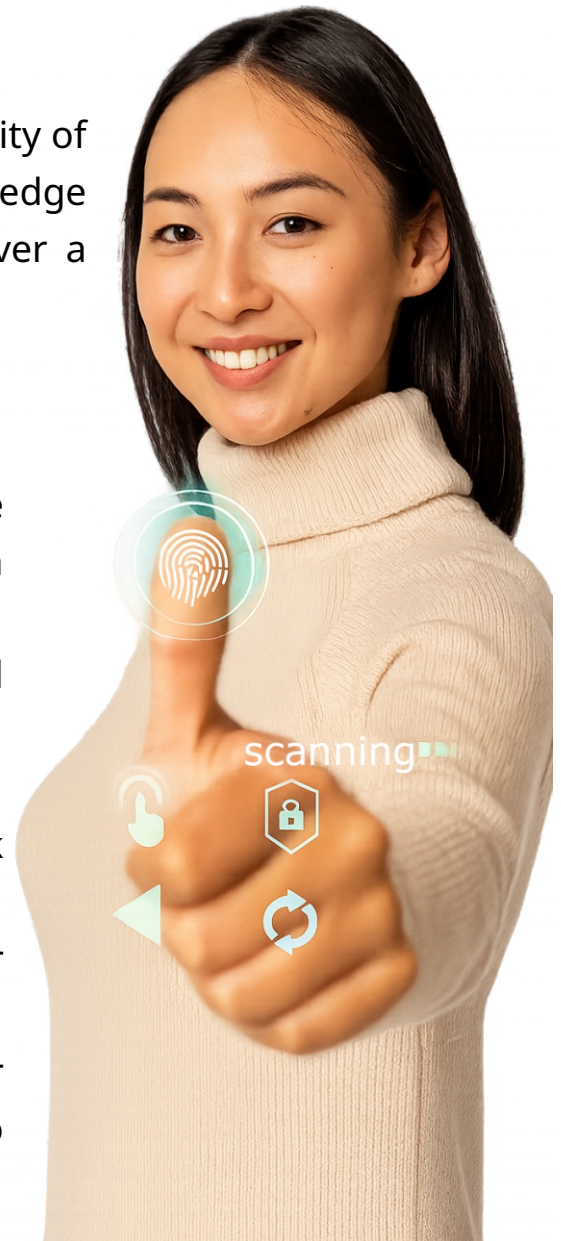
At TradePaceFX, the safety of our users and the integrity of our platform are top priorities. We combine cutting-edge technology with rigorous security standards to deliver a seamless, secure, and user-centric trading experience.

Platform Infrastructure

TradePaceFX is built on a high-performance, scalable infrastructure designed to handle large transaction volumes with minimal latency. Key features include:

- **Cloud-based architecture** for global reach and uptime
- **Real-time trading engine** for accurate execution
- **Automated system updates** to ensure peak platform performance
- **Redundancy protocols** to prevent data loss or downtime

This foundation supports all our services, from user dashboards to automated investments and crypto asset trading.



Data Protection Measures

We employ industry-leading security standards to protect user data and assets:

- **End-to-end encryption** for all user interactions
- **Two-Factor Authentication (2FA)** for account protection
- **Cold wallet storage** for the majority of digital assets
- **DDoS mitigation systems and firewall layers** for threat detection
- Regular **third-party security** audits and penetration tests

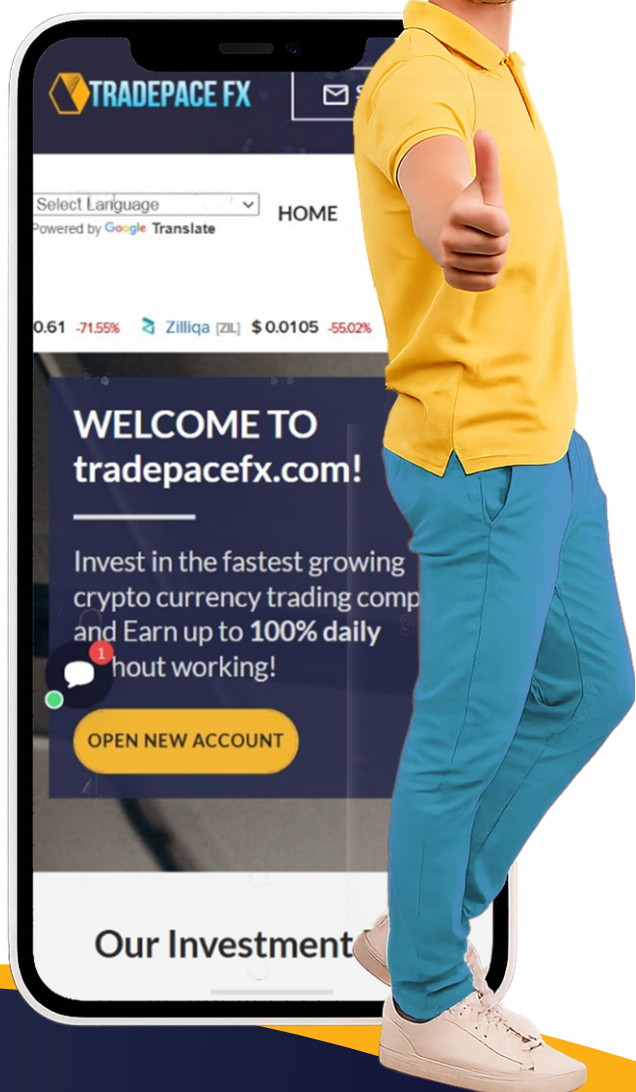
Our systems are proactively monitored and frequently updated to defend against evolving cybersecurity threats.

Accessibility & User Experience

We ensure a smooth and inclusive user journey across devices:

- **Cross-platform compatibility** (Web & Mobile)
- **Responsive dashboard** UI for real-time tracking of earnings and referrals
- **Multilingual support** for global users
- **Clear onboarding process** for new investors
- **User-friendly navigation** for all experience levels

From sign-up to withdrawals, every step on the TradePaceFX platform is optimized for ease, clarity, and trust.



Frequently Asked Questions

How do I get started?

Our platform is fully automated—simply enter basic information in the registration form, click “Register”, and you’ll be taken directly to your personal dashboard

What is the minimum withdrawal amount?

You can withdraw as little as \$10 at a time

What payment processors do you accept?

We support Bitcoin, Ethereum, Bitcoin Cash, and PerfectMoney for both deposits and withdrawals

How long does a withdrawal take?

Withdrawals are typically processed within 5–10 minutes, depending on the chosen payment processor

What is the minimum investment amount?

The minimum deposit required to join is \$1,000.

Can I use multiple payment processors?

Absolutely—you can deposit via any combination of our supported processors. However, withdrawals must be made back to the same processor you used for each deposit. You can track this through the withdrawal page

Frequently Asked Questions

How is interest calculated?

Interest is calculated based on the specific investment plan you choose. Each plan has a set ROI over its duration

I forgot my password. How can I recover it?

You can reset your password using the password recovery form available on the login page

Can I create multiple accounts?

No—each member is allowed only one account per person and per computer. Violations can result in account closure, and while deposits will be refunded, any earnings will not

I lost access to my email—can it be changed?

We do not allow email changes for security reasons. If you lose email access, contact support. We'll freeze your account and refund all funds after identity verification

Can family members share a computer?

Yes, but family members must use separate accounts and must not interfere with affiliate structures or incentivize improper referrals

Can I have multiple active deposits?

Yes—you are free to make multiple, simultaneous deposits, and each will earn separately according to its plan.

Contact Information

We value communication and are committed to offering our users the support and clarity they need at every stage of their investment journey.



support@tradpacefx.com



Nexia Christchurch Limited Level 4,
123 Victoria Street Christchurch
Central, Christchurch,
8013 New Zealand



www.tradpacefx.com

